

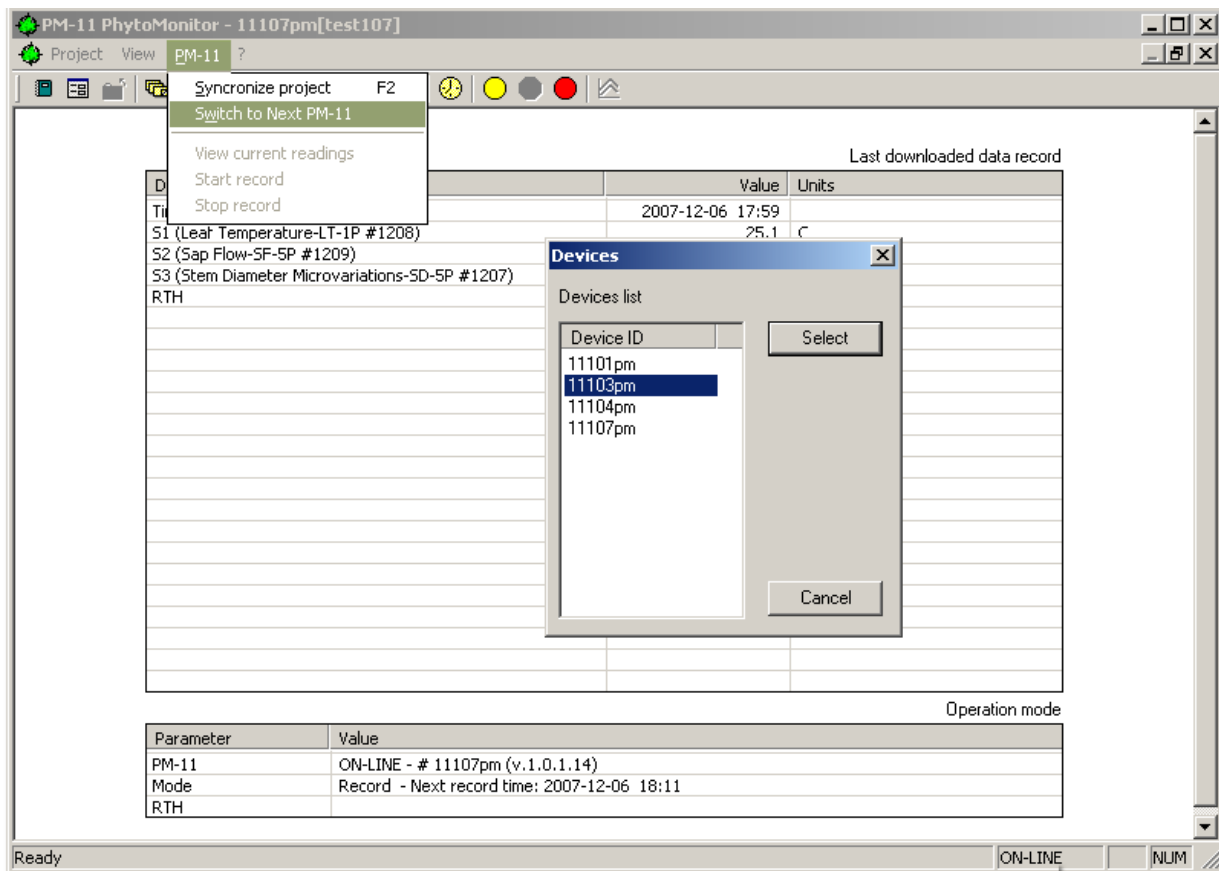
## PM-11 Phytomonitor • Quick Reference Guide

### RS485 Networking Software add-on

If your system is configured for several PM-11 units connected in RS485 network, your Terminal Emulator program contains an add-on, which provides selection of the PM-11 for communication. Your computer, which controls the network, may be connected only to one of PM-11 units at a time.

Every time, when you call a command, which must be addressed to a particular PM-11 unit, the program opens a selection window with the list of available PTM units.

When your computer is on-line with one of the PM-11 units, you may switch communication to another PM-11 unit by using a special command:



Recommended procedure for initial setup of the network.

1. At first, you have to complete wiring and to connect sensors as required.
2. Open the program and create a new Project of every PM-11 unit. It is advisable to include a serial number of the PM-11 in its project name.
3. Make connection and synchronization with each PTM using the appropriate Project.

For inquiries and assistance, please contact the manufacturer  
at [info.bioinstruments@gmail.com](mailto:info.bioinstruments@gmail.com)